



*my*  
**SYLVANT**  
BRINGING PEOPLE AND LIVES TOGETHER.

*sylvant*<sup>®</sup>  
*siltuximab*

*Bringing people & lives together*

### **Your guide to Sylvant<sup>®</sup>**

This material is only to be shared with patients after they have been prescribed Sylvant<sup>®</sup> by their HCP/already receiving Sylvant<sup>®</sup>.

 **RECORDATI**  
**RARE DISEASES**



# *Supporting you through diagnosis*

---

At Recordati Rare Diseases, we understand that a diagnosis of idiopathic Multicentric Castleman's Disease (iMCD) is likely to be one of the most impactful events in your life to date and in that, we are here to help.

As a global biopharmaceutical company, Recordati Rare Diseases is committed to delivering products that can have a meaningful effect on the lives of patients with rare diseases like iMCD.

We work tirelessly to discover solutions that can help confront current gaps in patient care. Our ambition and entrepreneurial culture drive us to explore and develop opportunities that we believe can bring about real change for patients like you.

## **Our commitment to rare diseases**

---

A rare disease like iMCD is defined as that which affects **less than 5 in 10,000** of the general population. There are between 6,000 and 8,000 known rare diseases and around five new rare diseases are described in medical literature each week.

Recordati Rare Diseases is committed to supporting treatment for patients with these conditions, who are often underserved in terms of access to effective therapies.

# What is Sylvant®?

---

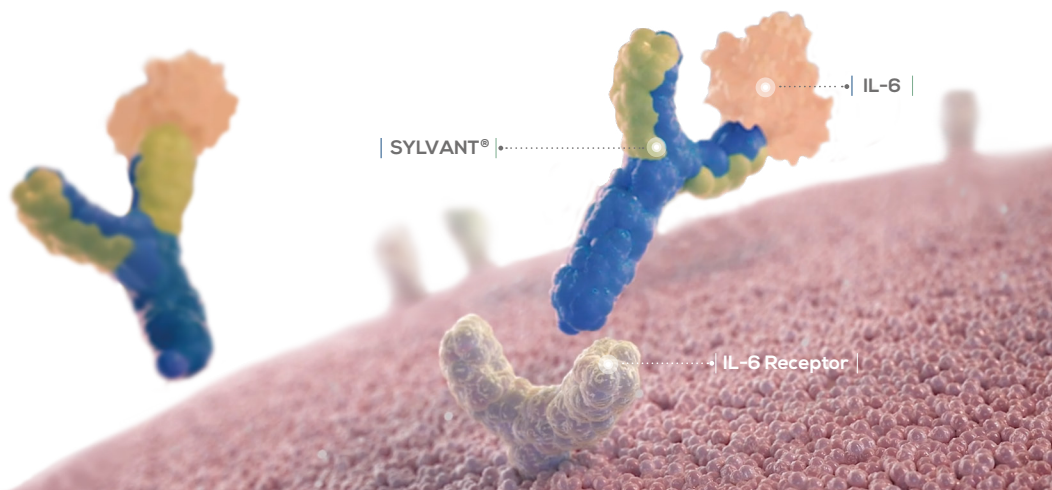
Sylvant® is an immune therapy or “biologic” that suppresses the body’s immune system. Sylvant® is highly targeted and exhibits its effect on a specific part of the immune system known as IL-6 which can often play a role in the development of iMCD.

## How does it work?

---

The immune system is governed by the activation of biological signals that trigger a range of effects or knock on effects in the body – much like a chain reaction. In iMCD, the IL-6 component of the immune system is said to be overactive which can lead to the growth of disease.

Sylvant® aims to address this by doing the biological equivalent of bending a key to prevent it from fitting its lock. It binds very strongly to the IL-6 molecules (key) inside your body to prevent them from fitting in their receptors (lock) and triggering the biological events which can lead to the growth of iMCD.





# Preparing for Sylvant®?

---

There is nothing in particular that you need to prepare for treatment with Sylvant® as your doctor will have performed the necessary investigation to identify you as a suitable candidate for treatment.

## On the day



You will be required to undergo blood tests prior to each dose of Sylvant® therapy for the first 12 months and every third dosing cycle thereafter. Treatment may need to be delayed if your blood tests are abnormal or if you exhibit certain side effects.



Sylvant® is delivered by intravenous infusion (similar to a fluid drip), which means you will likely need to be in a hospital for the duration and is delivered over the course of one hour.



You may wish to be accompanied by someone close to support you through your first treatment dose but you may feel you do not need it as you start to become familiar with the treatment and it becomes a regular part of your life.



Treatment is to be repeated every 3 weeks until your doctor decides you should no longer take Sylvant®.

# Are there any side effects?

---

Like most medications, there can be side effects. Not everyone treated with Sylvant® will experience them. Sylvant® is generally well tolerated but some common side effects can include:



Itchy skin



Rash



Joint pain



Diarrhoea



Infections (such as a chest or throat infection)

## Serious side effects and what to do

Anaphylactic (allergic) reactions can occur in certain patients but these are rare. These hypersensitivity reactions will typically occur shortly after administration of the treatment and you are therefore likely to be in hospital. If you begin to feel unwell at any point during treatment with Sylvant®, ensure that the attending healthcare professional is aware.

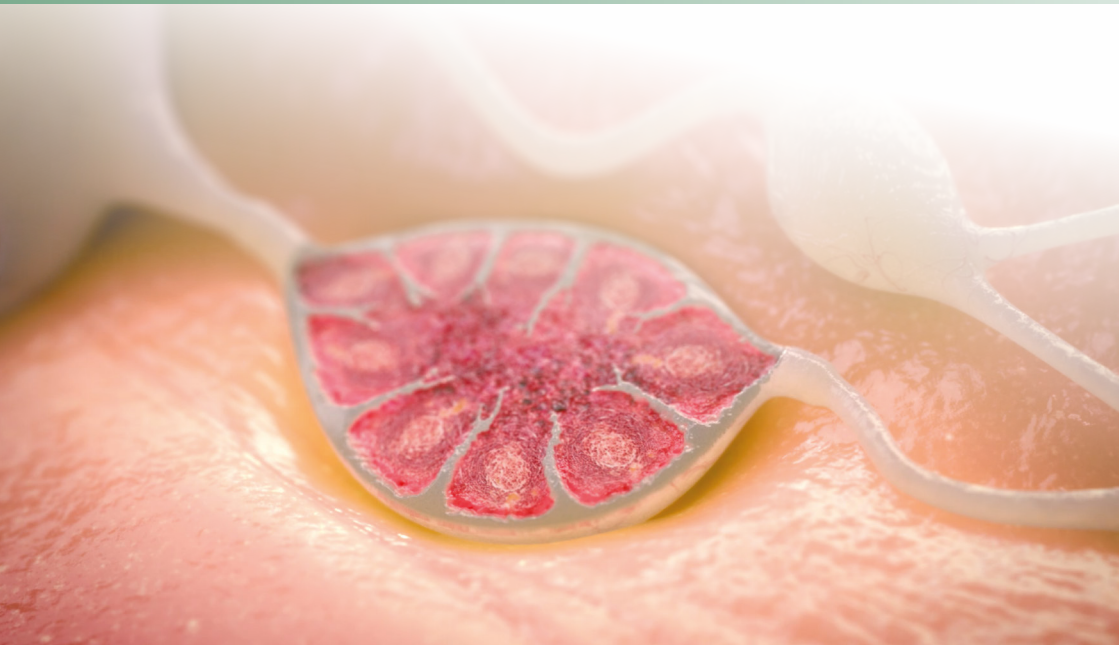
## What can **Sylvant**<sup>®</sup> do for me?

---

Sylvant<sup>®</sup> is the first and only FDA/EMA approved therapy for iMCD and is recommended by international guidelines as the first line therapy to treat your condition. It aims to bring lymph node growth under control by reducing their size and in the best of cases, put iMCD into remission entirely.

If you respond well to treatment, you can expect a reduction in the severity of your symptoms which will have a positive impact on your general wellbeing. However, it is important to note that iMCD is a progressive condition and treatment with Sylvant<sup>®</sup> will not cure it, however it may be able to keep it at bay so you can live as normally as possible.

**Treatment should be seen as a long term strategy that can help delay the progression of the disease for as long as possible.**





# Product support

---

If you have any questions about Sylvant® you can reach out to a Recordati Rare Diseases medical information contact:



+44 (0) 3305001155



## Medical Information

[recordati.com/contact-us-rare-diseases-medical-information/](https://recordati.com/contact-us-rare-diseases-medical-information/)



If you have more personal questions relating to your treatment and condition you should ask your doctor for guidance.



## Further resources

References

Sylvant® – Summary of Product Characteristics